

Challenges and Opportunities for STD Control Programs

Susan Blank, MD, MPH
October, 2006

sblank@health.nyc.gov



Outline

- Case Investigation / Partner Notification
- Direct Service Delivery

Case Investigation /Partner Notification-

Role -Identify source/ spread of disease;
implement containment methods

- Includes an increasing number of
conditions and their risk factors

Key Issues

- Staffing
- Training
- Management/ Accountability

Case Investigation /Partner Notification- Staffing

- Largely a health department function, supported by varying degrees of federal, state, local funds
- Backbone = Disease Intervention Specialists
- Requires : analytic, communication skills, resourcefulness, persistence, cultural competency

Case Investigation /Partner Notification- Staffing

- Recruitment-Entry level pay hasn't kept up with increasing complexity of job
- Retention
 - Advancement opportunities limited
 - ↓ funding + ↑ cost of living = line attrition
- High level veteran and entry level staff, without much at mid-level. Veterans retiring without much in pipeline

Case Investigation /Partner Notification- Mangement & Accountability

- Better define what constitutes a good case investigation
- Data systems for tracking investigation are cumbersome, not fully integrated across categories of responsibility

Case Investigation / Partner Notification- Opportunities

- Update training
 - Harmonize materials across areas of integration
 - Strengthen competency in areas of behavioral determinants of sexual behavior
- Facilitate investigative process
 - Increase emphasis on problem-solving
 - Incorporate use of newer technologies our cases use, and make use of related data sources

Case Investigation / Partner Notification- Opportunities

- Augment disease intervention capacity by making it easier to treat/ link to care index pts, to notify partners & Tx partners
 - Est. named reporting / registry sharing protocols
 - Est. expedited partner therapy (via staff or patient)
 - Partner card distribution via internet, text messaging
 - Requires examining +/- revising reporting, consent and dispensing laws

Case Investigation / Partner Notification- Opportunities

- Redesign data systems for better integration across conditions of interest diseases, and between surveillance and investigation data
 - National vs local solutions
 - Timeliness of system development
 - System support over time
 - Ability to easily integrate local solutions into national systems

Service Delivery

- Jurisdictions generally have mandates requiring provision of access to STD services and/or direct provision of such services
 - Trend to contract out, though some still provide direct service delivery

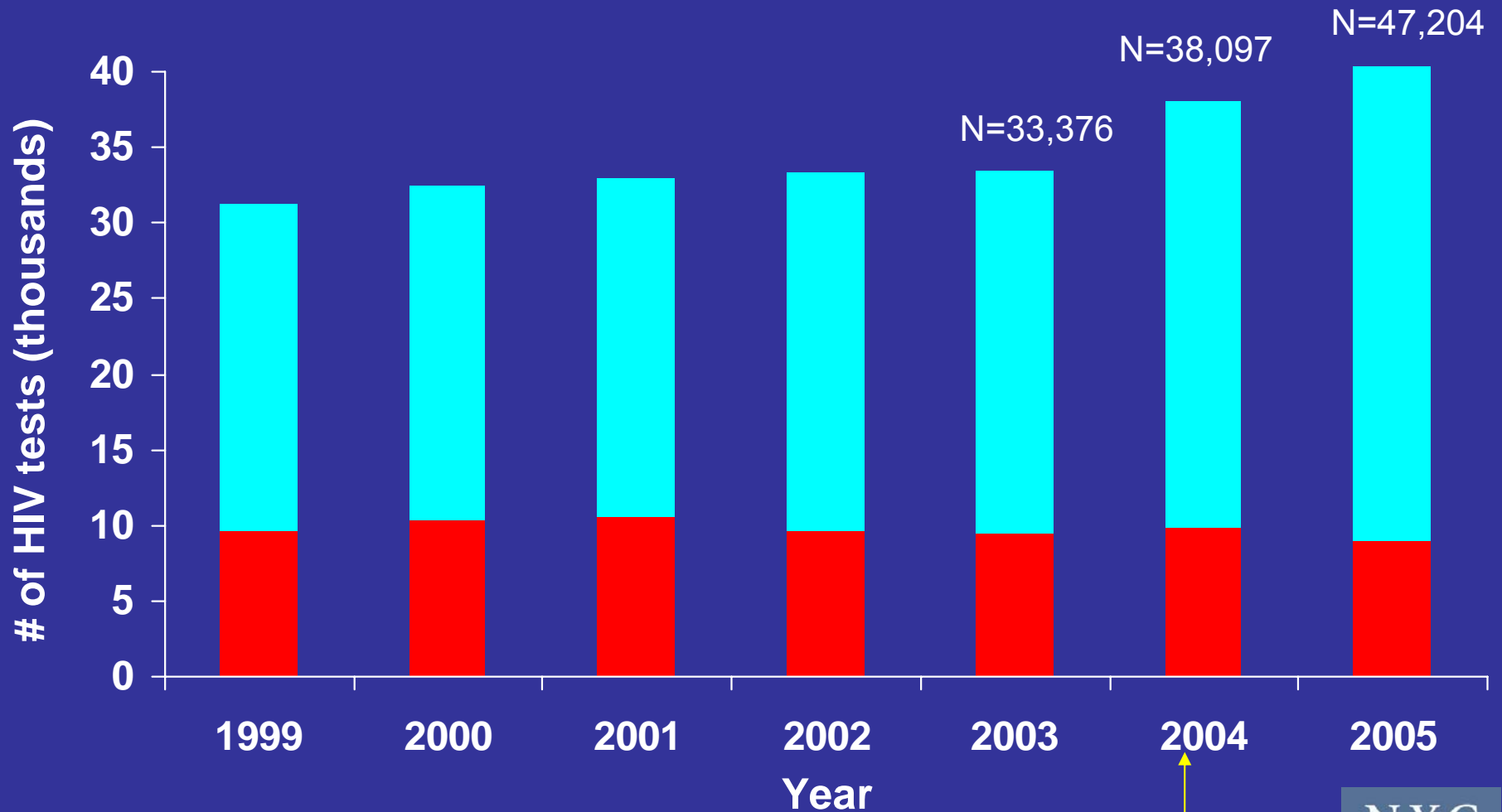
Direct Service Delivery

- Pressure to increase the range of STD and related services
 - HIV testing (esp rapid tests, screening for acute HIV)
 - Hep A/ Hep B vaccination,
 - Hep C screening
 - Reproductive health
 - Emergency contraception
 - Cervical cancer screening
 - Mental Health / substance use
 - Other locally important, +/- related issues
 - Health care access
 - Flu vaccine
 - Tobacco cessation

Direct Service Delivery

- Challenge – maintaining up-to-date STD clinical expertise (diagnostic and treatment modalities)
while accommodating other important (+/- funded) mandates /activities

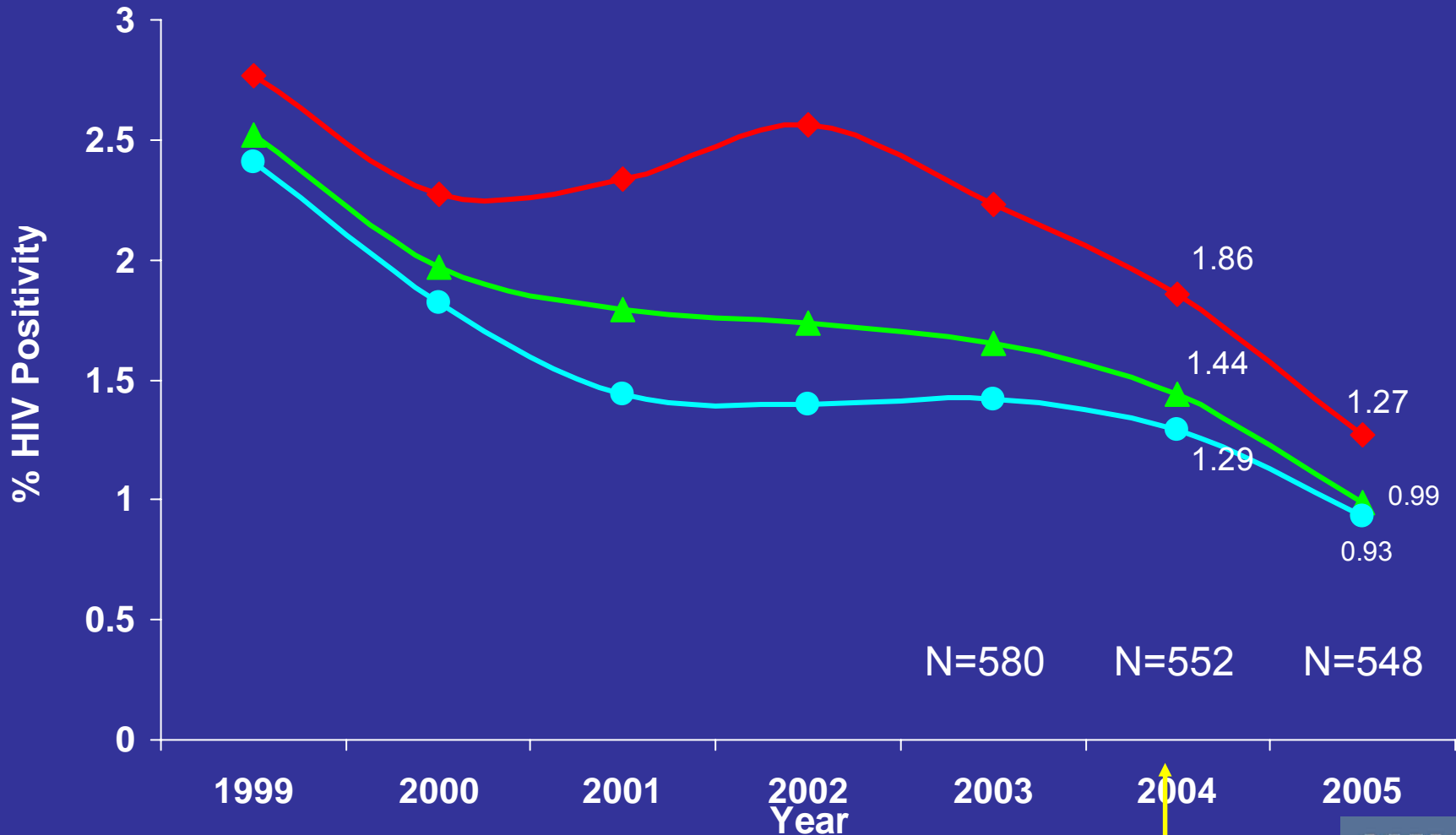
HIV Tests, NYC STD Clinics, 1999-2005



■ Confidential
■ Anonymous

Rapid Testing

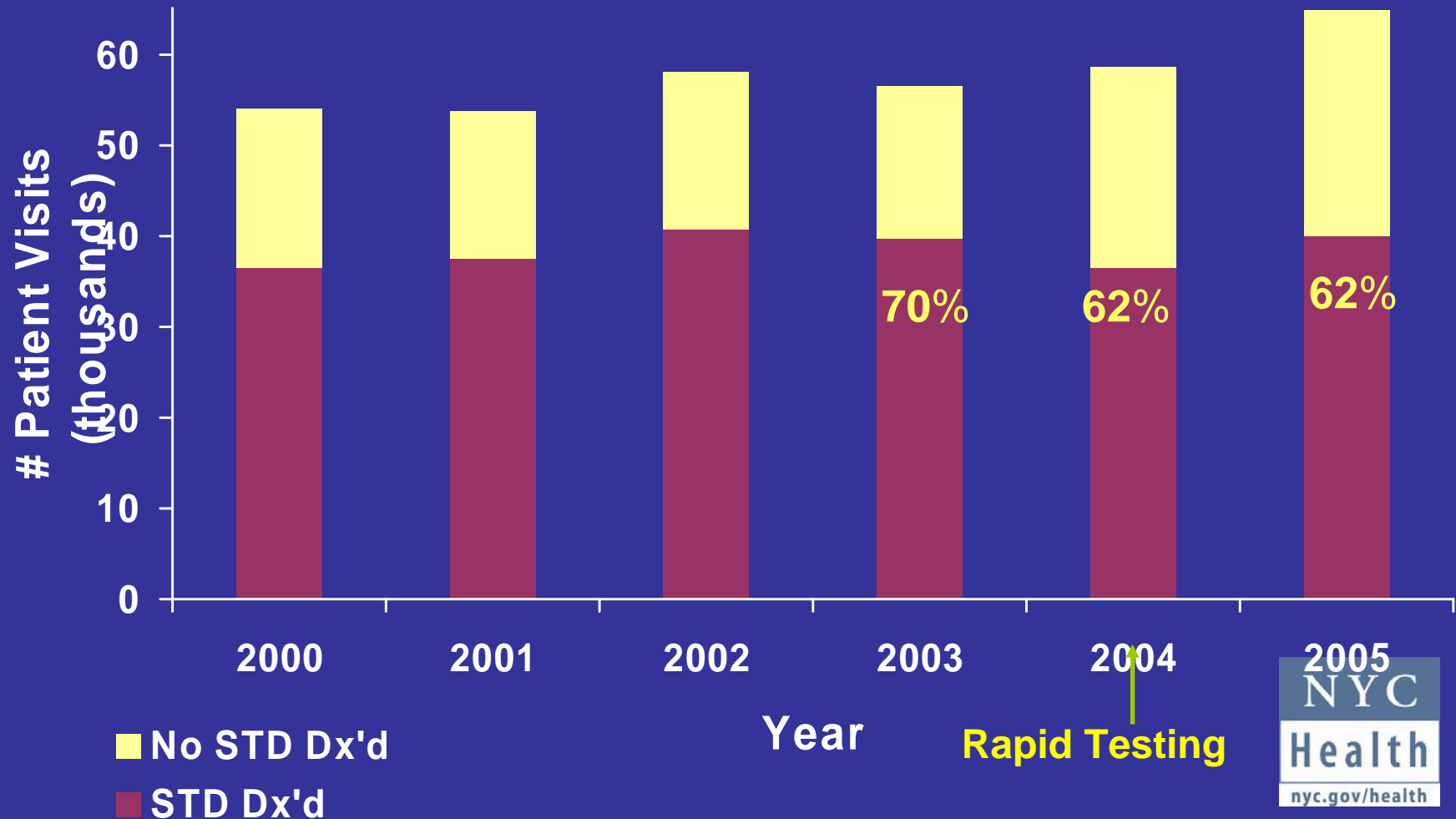
HIV Positivity Rate, NYC STD Clinics, 1999-2005



- ▲ Total
- ◆ Anonymous
- Confidential

Rapid Testing

First MD Visits and STD Diagnoses, NYC STD Clinics 2000-2005



Rapid HIV Testing at NYC STD Clinics

Other consequences

- With fixed workforce, adding HIV rapid duties detracts fr other duties (field work, counseling)
- Increased volume of 1st MD visits
- Decreased HIV positivity rate among testers
- Decreased STD diagnoses among 1st MD visits (More worried well seeking HIV C&T; accepting MD evaluations while there)

Direct Service Delivery

- Incorporating new technologies
 - Develop / improve quality , timeliness and utility of QA systems
 - Use new technologies to streamline patient follow up (automated phone systems, e.g.)
 - Stay ahead of new threats to patient confidentiality
 - Enhance ability to bill third parties without erecting barriers to STD services
- Ensuring STD outreach activities in key venues – jails, high schools, private provider offices

Thank You !